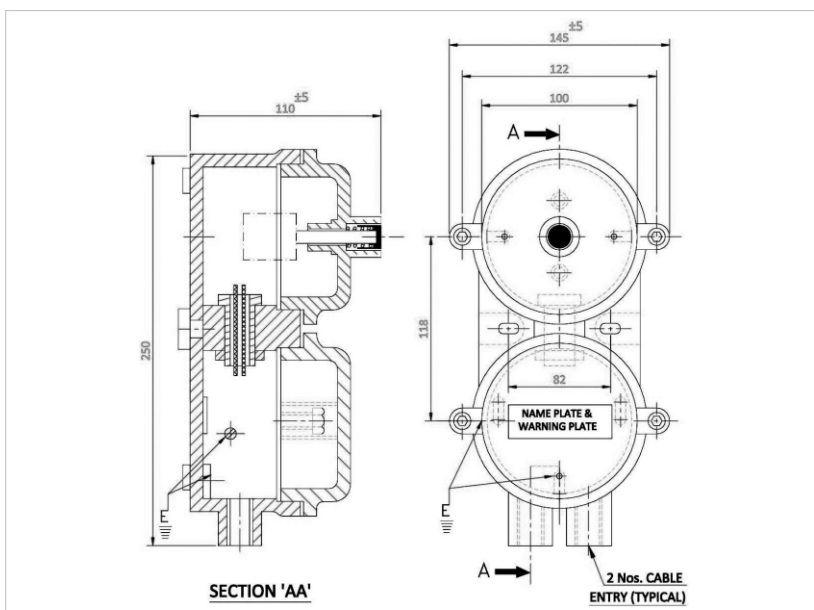


# PATCO FLAME PROOF PRODUCTS

Manufacturer of : Flameproof / Weatherproof, Electrical Equipment, Lighting Fittings, LED Lighting Fittings, Instruments Enclosure & Cable Glands Tested Certified by CIMFR, Dhanbad

## FLP / WP ONLY START PUSH BUTTON STATION



Catalogue No.	PFP/PBS/09
Type of Ex-Protection	AS PER IS 2148-2004 / IEC-60079-1:2007
Zone Classification	Zone 1 & Zone 2
Gas Group	Gas Group I, IIA, IIB
Ingress IP Protection	IP-65 IS / IEC60529-2001
Material of Contraction	High Pressure Die Cast Aluminum Alloy LM6
Green Push Button	START with 1 NO Contact element for 10 AMP
Paint	Epoxy Polyester Powder Coating
Earthling	Internal: 01 No. & External: 2 Nos.
Cable Entry	02 Nos. for M20 (3/4" ET)
Hardware	Stainless Steel